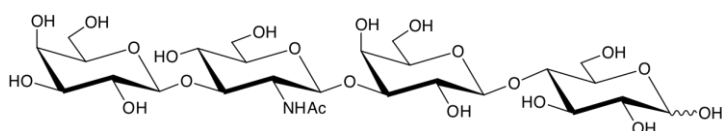
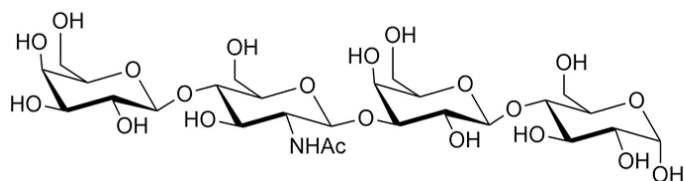


## LNT/LNnT mixture

The material is a pure (>95% relative to other sugars) mixture of lacto-N-tetraose and lacto-N-neotetraose with the relative proportions in the range 1:2 to 1:1.



LNT



LNnT

<b>CAS No:</b>	14116-68-8 (LNT), 13007-32-4 (LNnT)
<b>Source:</b>	Human milk
<b>Synonyms:</b>	Gal-b-1,3-GlcNAc-b-1,3-Gal-b-1,4-Glc (LNT), Type1 Gal-b-1,4-GlcNAc-b-1,3-Gal-b-1,4-Glc (LNnT), Type2
<b>Product Code:</b>	45/10
<b>MDL No:</b>	MFCD00079413 (LNT), MFCD00467190 (LNT)
<b>Chemical Formula:</b>	C <sub>26</sub> H <sub>45</sub> NO <sub>21</sub>
<b>Molecular Weight:</b>	707.63
<b>NMS:</b>	707.248